



Construction Trades II Virtual Learning

Project Book 2

April 24, 2020



Construction Trades II

Lesson 15: April 24, 2020

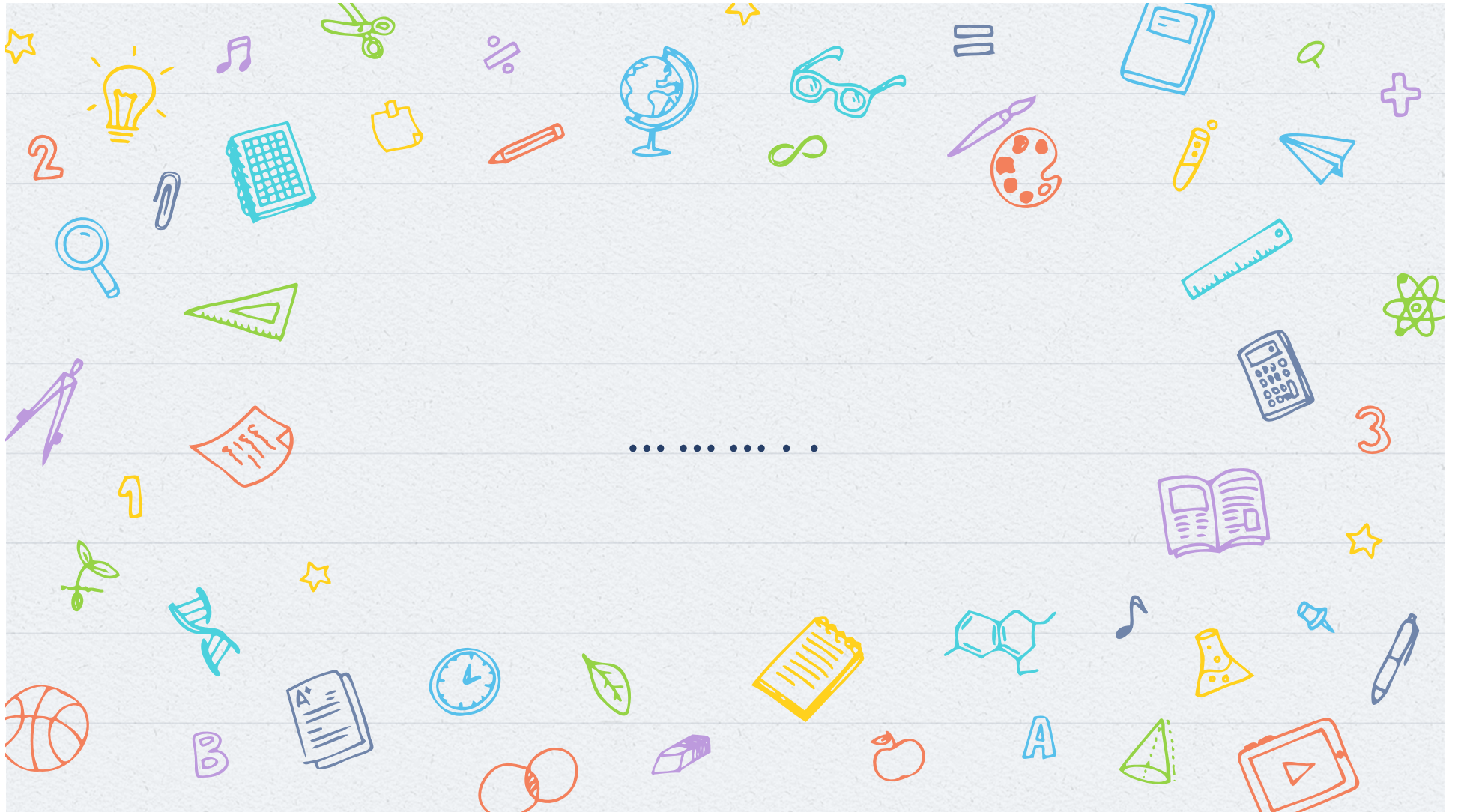
Objective/Learning Target:

*Check depth of knowledge with the quiz provided.

WHEN WORKING WITH POWER TOOLS, THE HEIGHT OF A SAWHORSE USED IS
TYPICALLY
HIGHER THAN THE HEIGHT OF A SAWHORSE USED WHEN WORKING WITH
HAND TOOLS. *

TRUE OR FALSE?



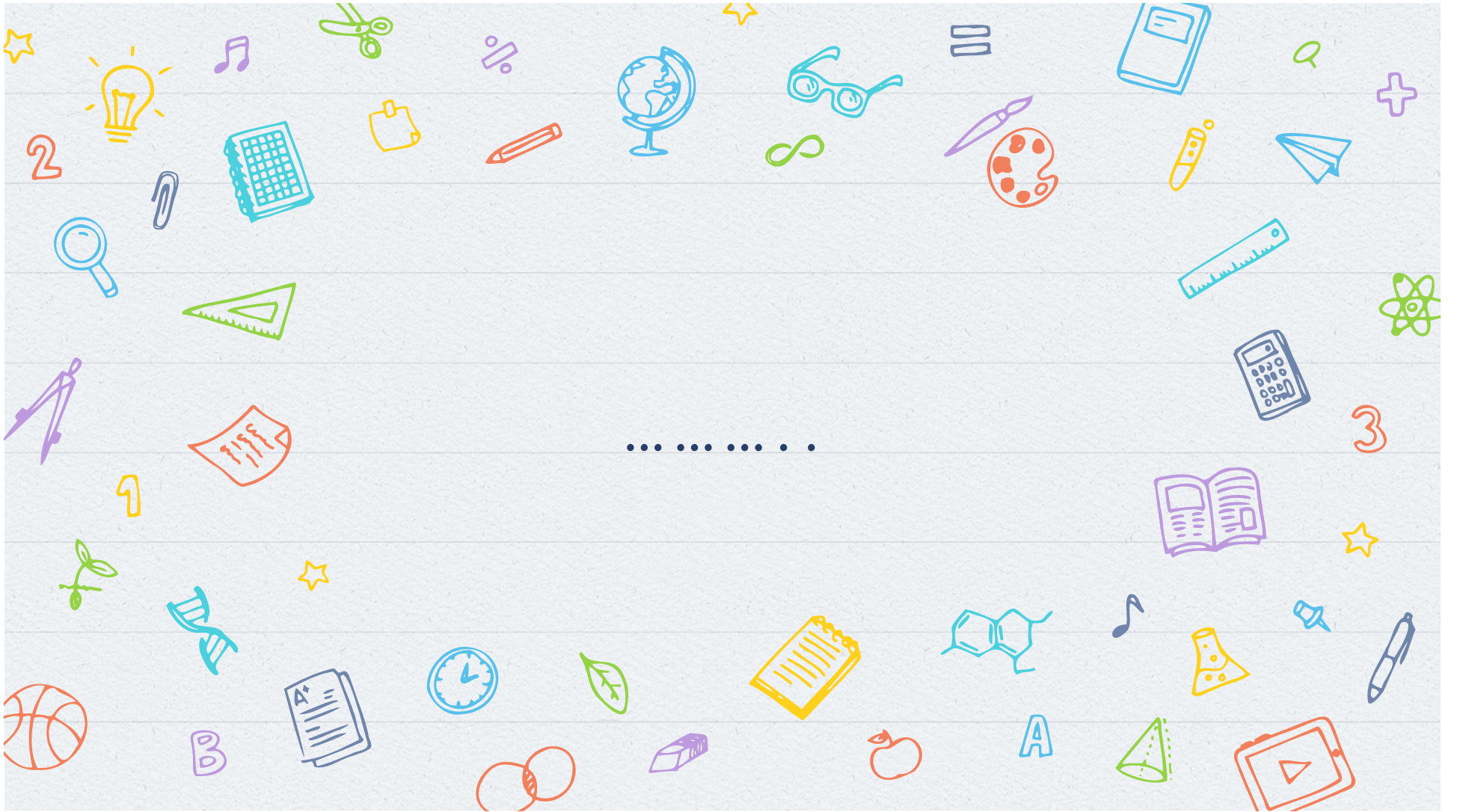


ANSWER: TRUE

THE LONGER LEGS OF THE SAWHORSE ALLOW FOR MORE LEVERAGE WHEN USING A HANDSAW. *

TRUE OR FALSE?





ANSWER: FALSE



THE I-BEAM SAWHORSE IS MADE TO SUPPORT HEAVY MATERIALS THAT NEED TO BE CUT OR WORKED.

TRUE OR FALSE?







ANSWER: FALSE

THE I-BEAM SAWHORSE IS MADE TO SUPPORT HEAVY MATERIALS THAT
NEED TO BE CUT OR WORKED?

TRUE OR FALSE?

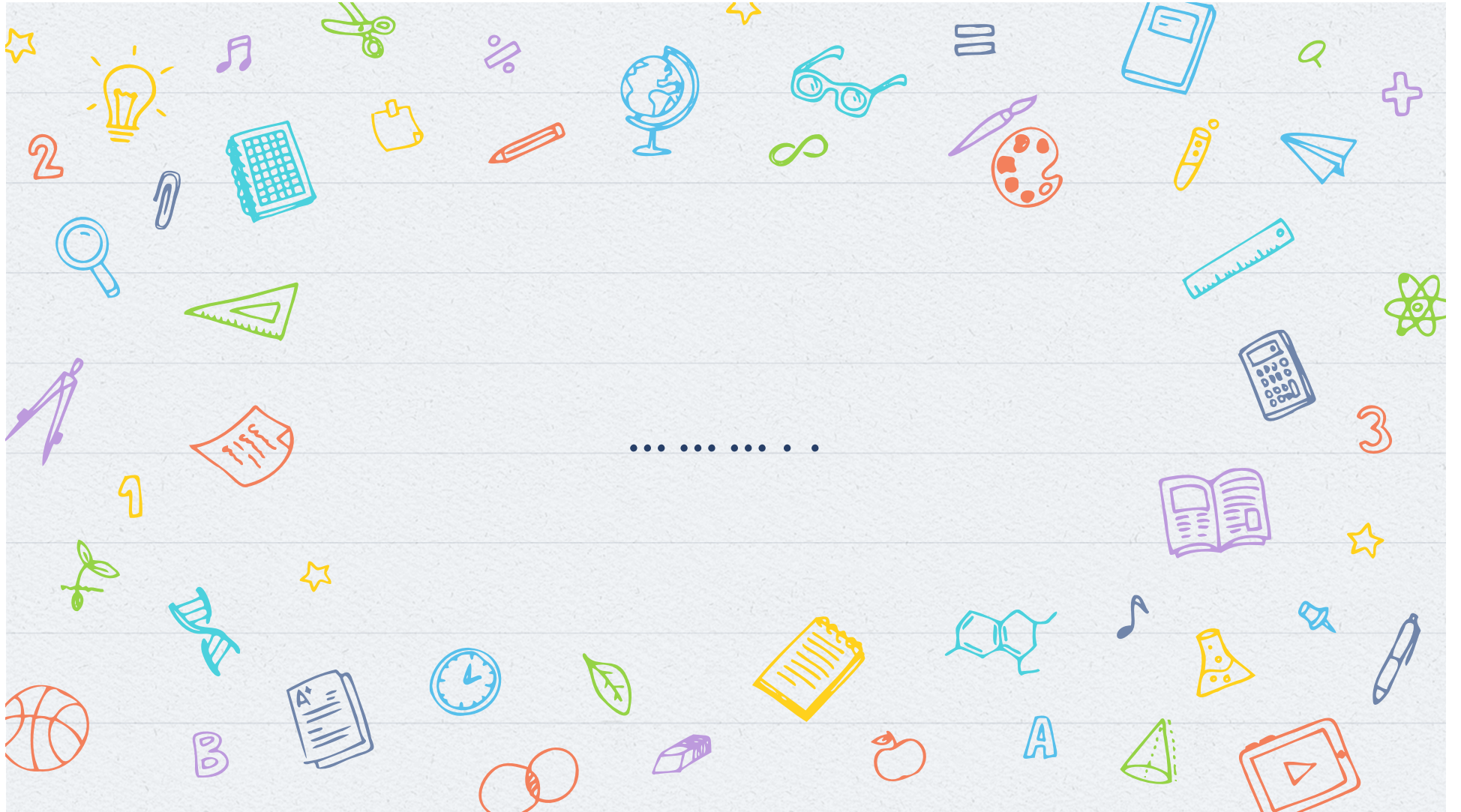


ANSWER: TRUE

THE CONSIDERABLE STRENGTH OF THE I-BEAM SAW HORSE COMES FROM THE
ADDITIONAL 2 X 4 APPLIED TO THE TOP.

TRUE OR FALSE?



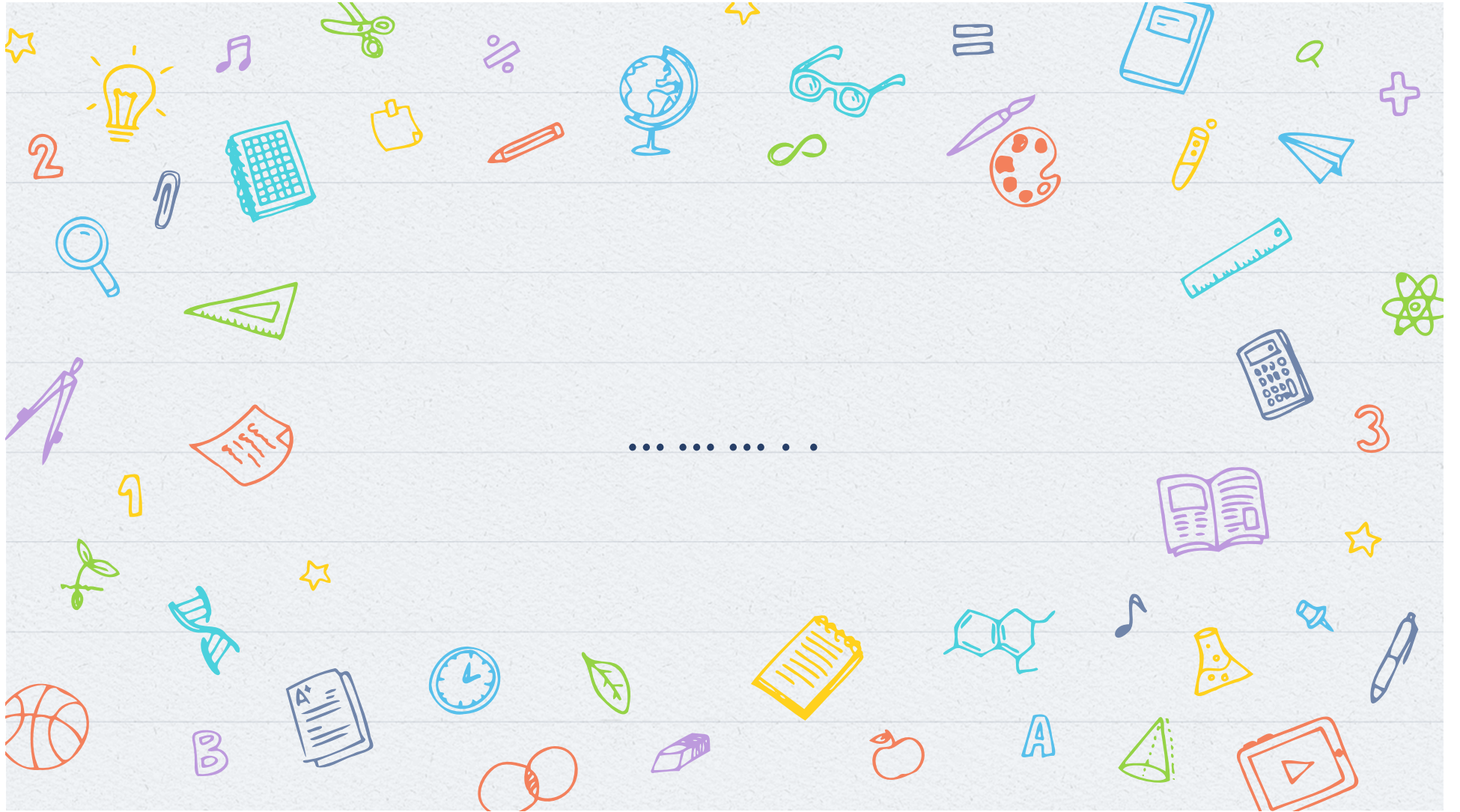


ANSWER: FALSE

WHEN CUTTING THE 1 X 4 LEGS FOR THE I-BEAM SAWHORSE, BOTH AN ANGLE ADJUSTMENT AND A DEPTH ADJUSTMENT MUST BE MADE ON THE SAW BEFORE CUTTING.

TRUE OR FALSE?





ANSWER: TRUE

A BEVEL CUT IS MORE DIFFICULT TO MAKE THAN A 90 DEGREE CUT

TRUE OR FALSE?







ANSWER: TRUE



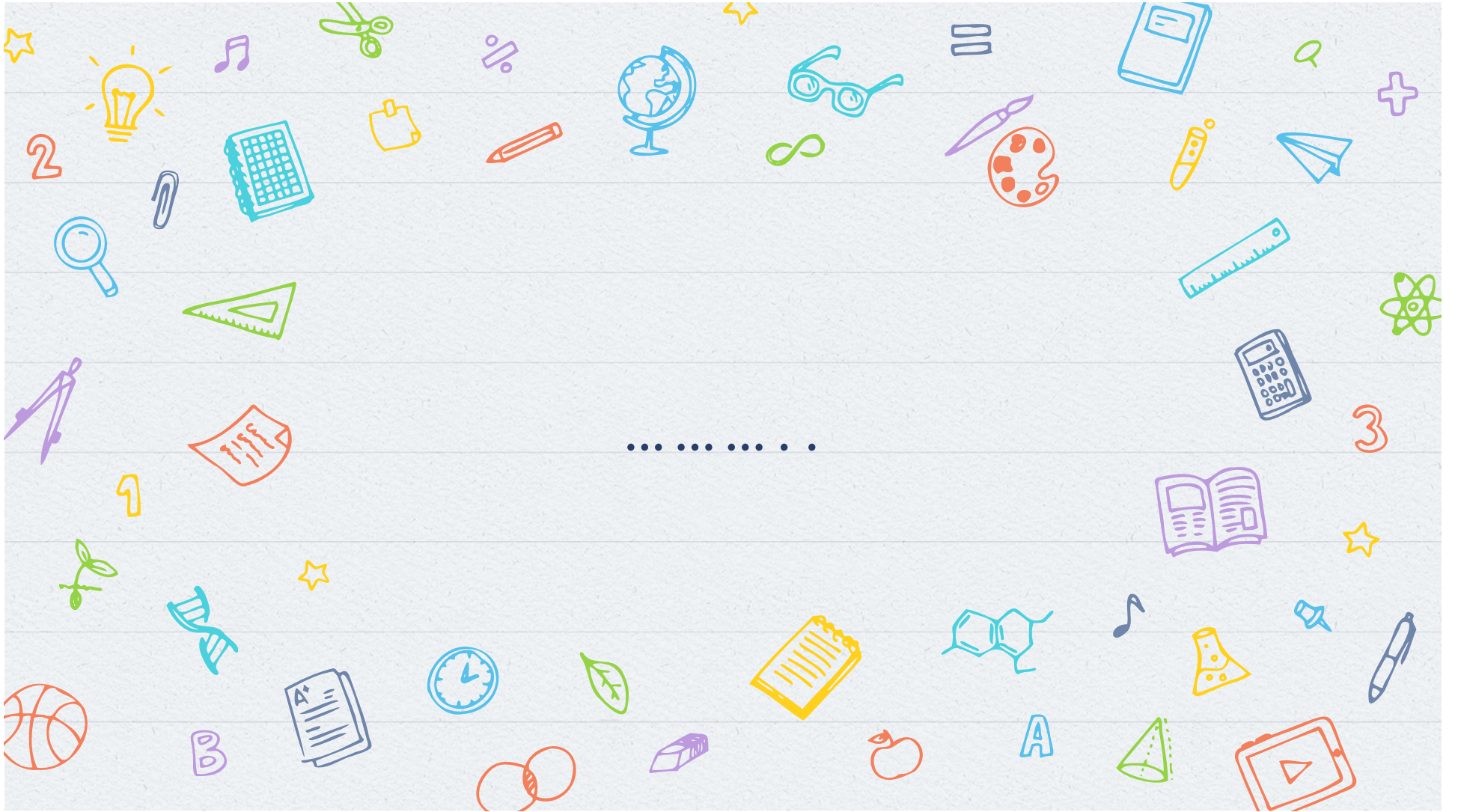
ANSWER: GAIN



WHICH OF THE FOLLOWING EXPLAINS WHY PILOT HOLES ARE DRILLED BEFORE FASTENING SOME PARTS WITH SCREWS?

- IT MINIMIZES THE POTENTIAL FOR SPLITTING.
- IT ALLOWS YOU TO PRACTICE USING A DRILL.
- IT MAKES IT EASIER TO TAKE APART.
- IT ALLOWS SHORTER SCREWS TO BE USED.





ANSWER : IT MINIMIZES THE
POTENTIAL FOR SPLITTING.

THE LEGS OF THE I-BEAM SAWHORSE ARE REINFORCED WITH BRACES CALLED.

- SUPPORTS
- GUSSETS
- GAINS
- KERFS

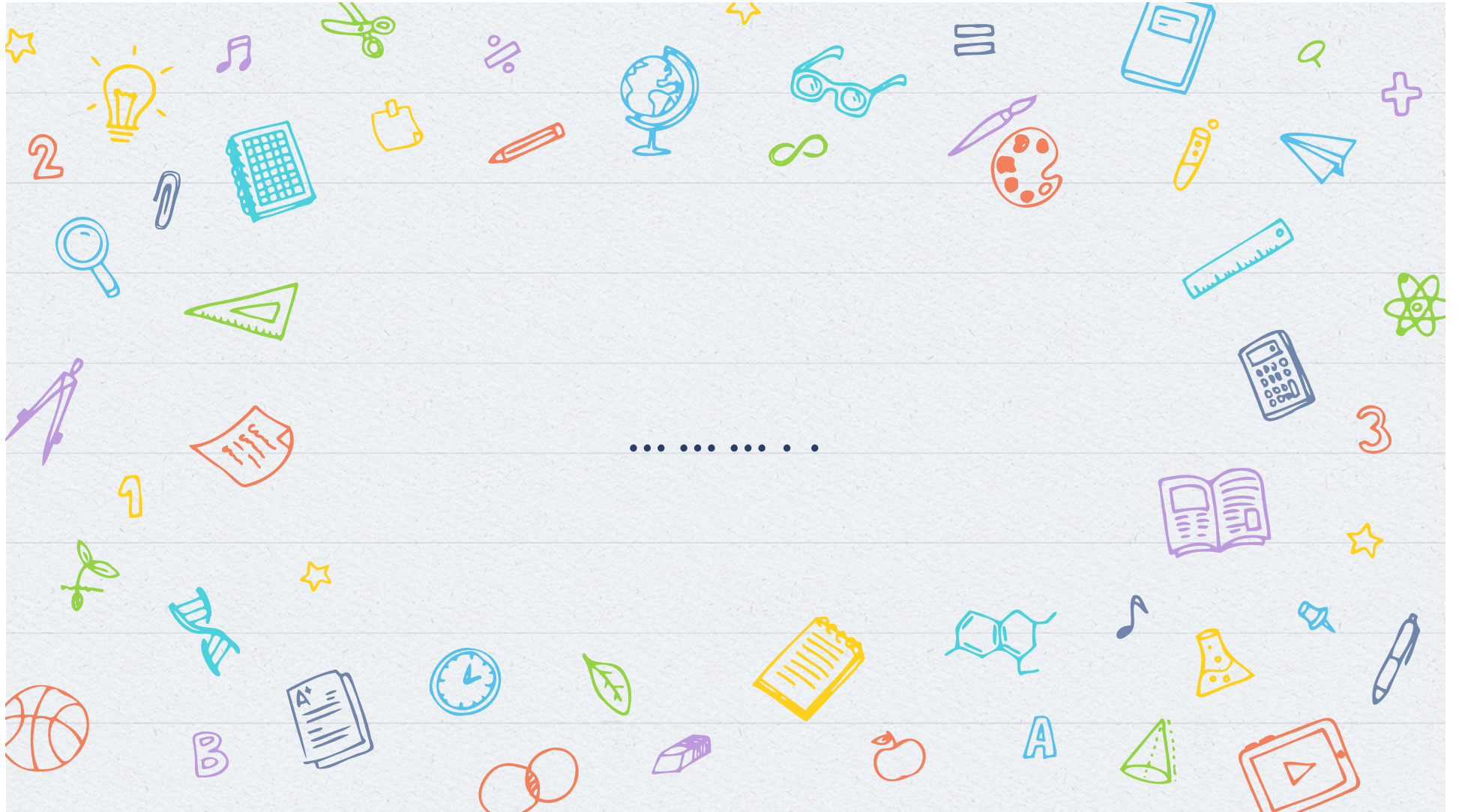




ANSWER: GUSSETS

----- GAUGES MAKE IT RELATIVELY EASY TO REPEAT PRECISE
LAYOUTS ANY NUMBER OF TIMES



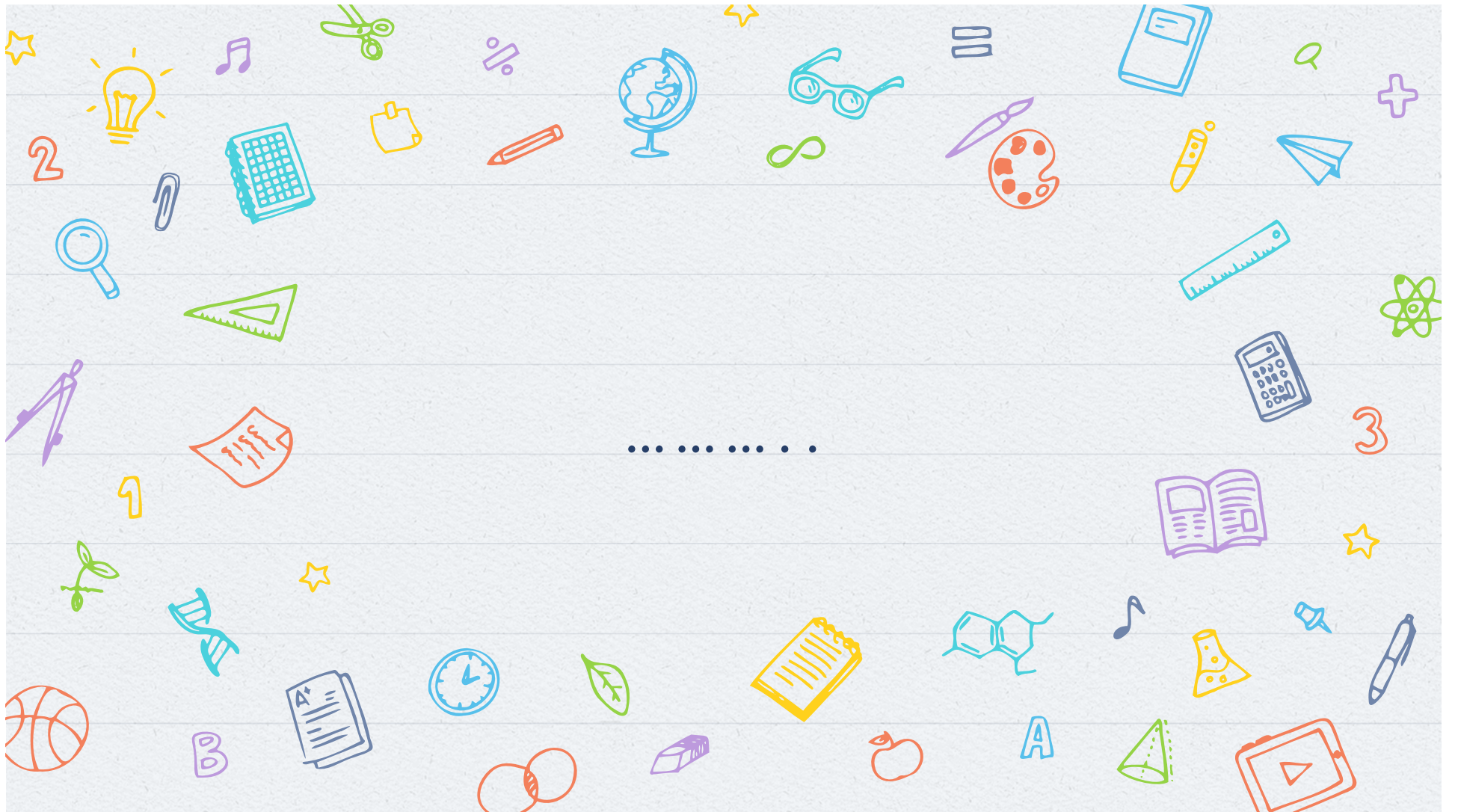


ANSWER: STAIR



IF THE _____ FOR THE BEVELED-TOP SAWHORSE ARE NOT ALL CUT TO THE EXACT SAME LENGTH, THE SAWHORSE WILL NOT STAND STRAIGHT AND MAY WOBBLE.





ANSWER: LEGS